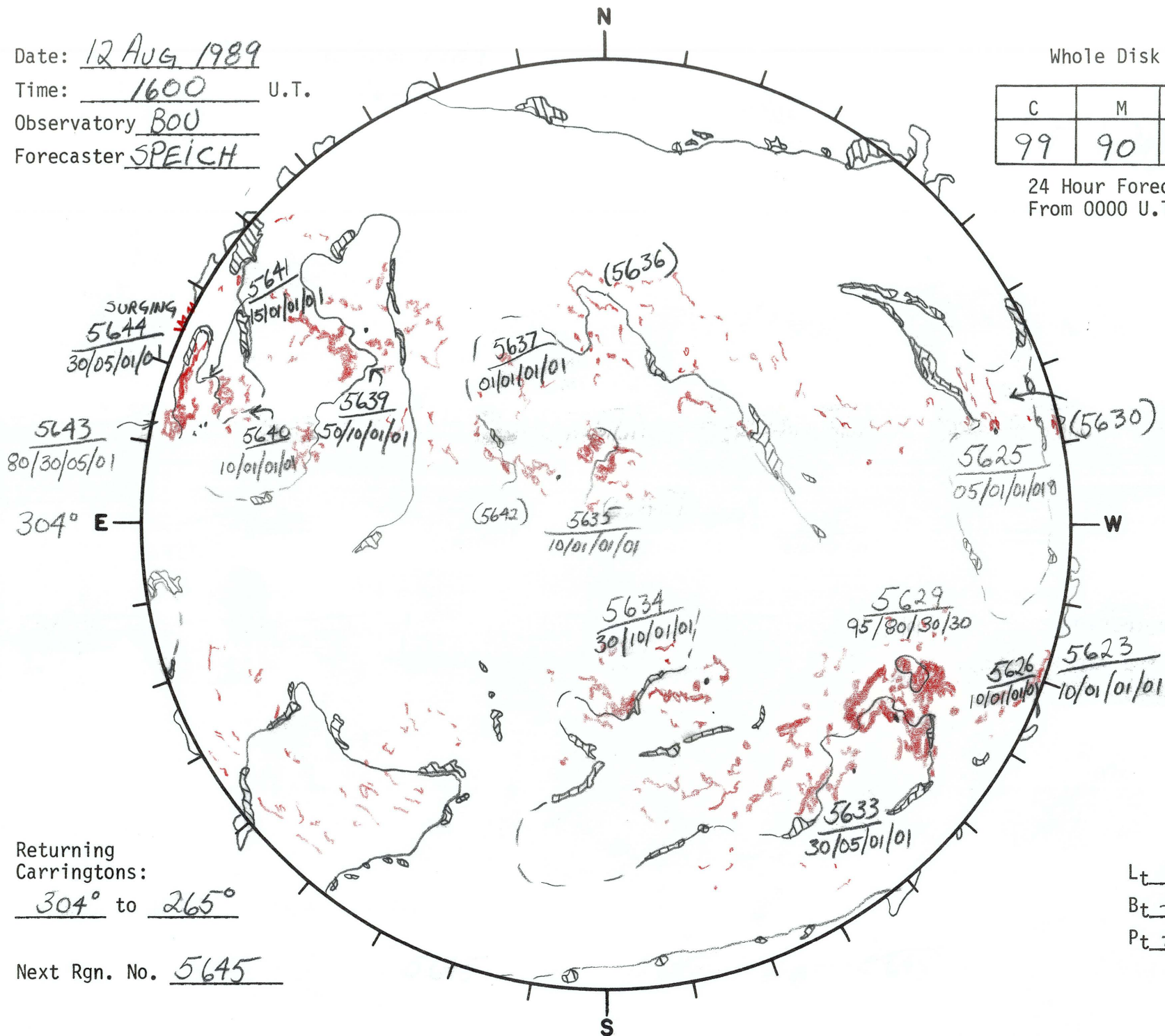


Date: 12 AUG 1989  
 Time: 1600 U.T.  
 Observatory BOU  
 Forecaster SPEICH

Whole Disk Forecast

C	M	X	P
99	90	30	30

24 Hour Forecast  
 From 0000 U.T. to 0000 U.T.



Returning Carringtons:  
304° to 265°

Next Rgn. No. 5645

$L_t$  034.4°  
 $B_t$  +6.6°  
 $P_t$  +15.2°